



PAYPER



FLORENTIA

S00024-P051

Camicia da uomo, vestibilità slim, collo italiano sagomato con nasello chiuso e stecche estraibili, cannoncino ripiegato all'interno, abbottonatura a vista, carré liscio sul retro, pince di ripresa a metà schiena, chiusura fianchi con mosca di tessuto, polsi stondati con 1 bottone.

Composizione: 97% COTONE + 3% ELASTAN

Aspetto: STRETCH POPELINE

Peso: 120 GR/MQ

Taglie: 37-38-39-40-41-42-43-44-45

Imballo: 1/20

MADE IN: MADE IN CHINA

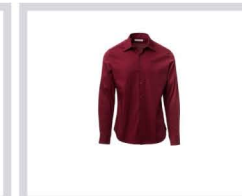
HS CODE: 62052000



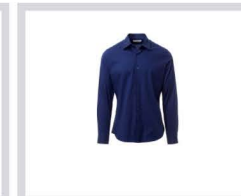
Colori



BIANCO



BORDEAUX



BLU ZAFFIRO



AZZURRO PLACIDO



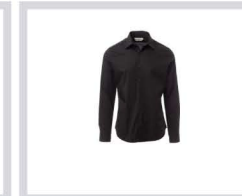
BEIGE DUNA



GRIGIO CHIARO



GRIGIO FERRO



NERO



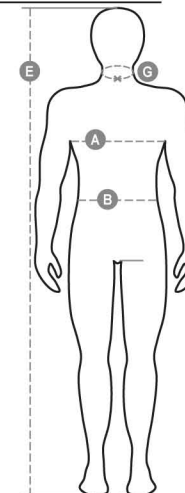
Guida alle taglie

NEW SHIRTS (Development in neck sizes)

G = Collar - cm	37	38	39	40	41	42	43	44	45	46	47	48	49	50	51
G = Collar - in	14½	15	15½	15¾	16	16½	17	17½	17¾	18	18½	19	19½	19¾	20
INT *	S	S _B	M	M _B	L	L _B	XL	XL _B	XXL	XXL _B	3XL	3XL _B	4XL	4XL _B	5XL
IT - DE	44	44/46	46/48	48/50	50/52	52/54	54/56	56/58	58/60	60/62	62/64	64/66	66/68	68/70	70/72
FR - ES	40	40/42	42/44	44/46	46/48	48/50	50/52	52/54	54/56	56/58	58/60	60/62	62/64	64/66	66/68
UK	34	36	38	39	41	42	44	46	47	48	50	52	53	55	56
(A) - cm	88	92	96	100	104	108	112	116	120	124	128	132	136	140	144
(A) - in	34	36	38	39	41	42	44	46	47	48	50	52	53	55	56
(B) - cm	76	80	84	88	92	96	100	104	108	112	116	120	124	128	132
(B) - in	30	32	33	34	36	38	40	41	43	45	46	48	49	51	52
(E) - cm	170/181			175/187						175/190					
(E) - in	67/71			69/73						69/75					

* B = BROAD

Istruzioni di lavaggio



Certificazioni