

B&C SAFRAN PURE LSL /W. - PW 456

B&C
COLLECTION

FOR MA
www.magliettestampate.eu



SKINNY FIT

- Polo manica lunga in Piqué
- Collo a coste 1x1
- Placchetta rinforzata 4 bottoni tono su tono
- Taglio femminile
- Cuciture laterali
- Nastro di rinforzo
- Spacchetti laterali

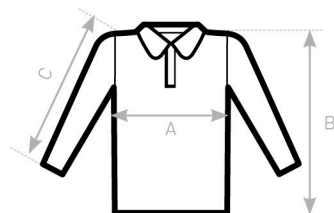


- 100% cotone ring-spun pettinato preristretto
- Fine Piqué
- 180 g/m²
- XS - S - M - L - XL - 2XL
- 5 pz/pacco & 25 pz/cartone



DU♂
C♀NCEPT

con B&C Safran LSL /men



SIZES [CM]

B&C SAFRAN PURE LSL /W. PW 456	XS	S	M	L	XL	2XL	3XL
A HALF CHEST	40,5	43,5	46,5	49,5	52,5	55,5	-
B BODY LENGTH FROM NECK POINT	58	60	62	64	66	68	-
C SLEEVE LENGTH	58	59	60	61	62	63	-



OEKO-TEX®
CONFIDENCE IN TEXTILES
STANDARD 100
1501003 Centexbel
Tested for harmful substances.
www.oeko-tex.com/standard100